



SELF STORAGE ADVISORS

**SELF STORAGE**  
LEASE UP OPPORTUNITY

**Access Self Storage**  
203 Strykers Road  
Lopatcong, NJ 08865

Linda Cinelli, CCIM & Edan Cohen

LC Realty

908-722-5661 / Linda@LCRealtyUSA.com

646-630-8511 / Edan@LCRealtyUSA.com



**OFFERING PRICE: \$3,995,000**

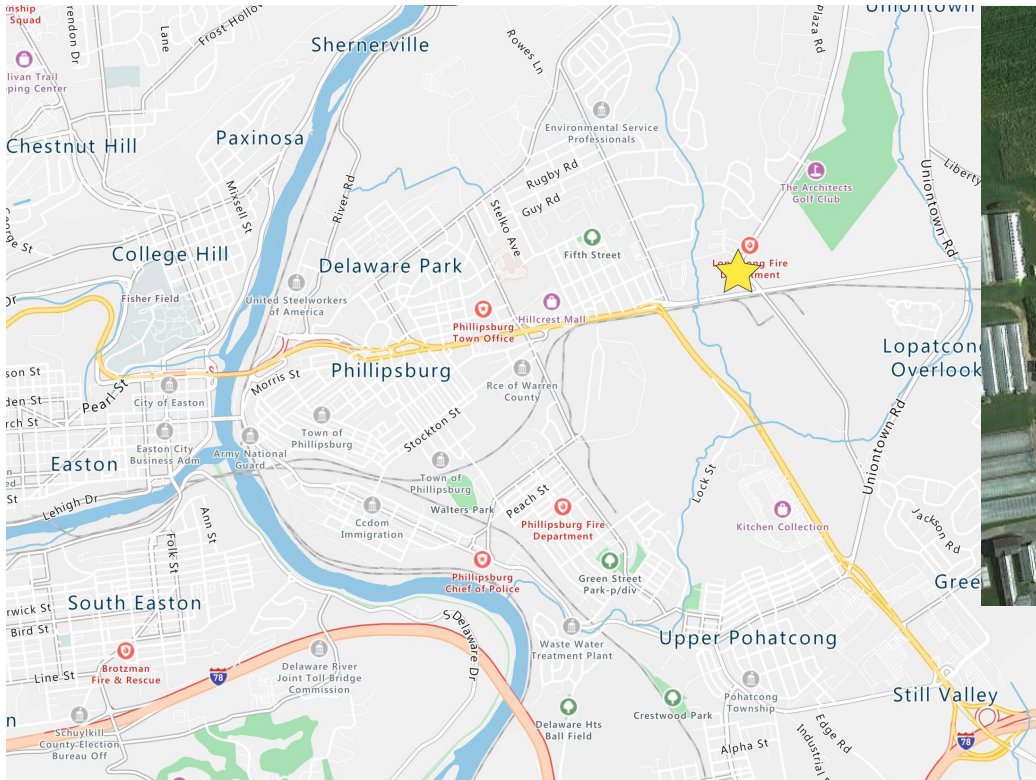
**INVESTMENT HIGHLIGHTS**

- Four-Story (Including Lower Level) Class "A" Facility
- 100% Climate Controlled
- 323 Units
- 18,074 NRSF
- 2018 Construction

**PROPERTY DETAILS**

- 323 Units
- 18,074 RSF
- Built in 2018
- 0.91 Acres



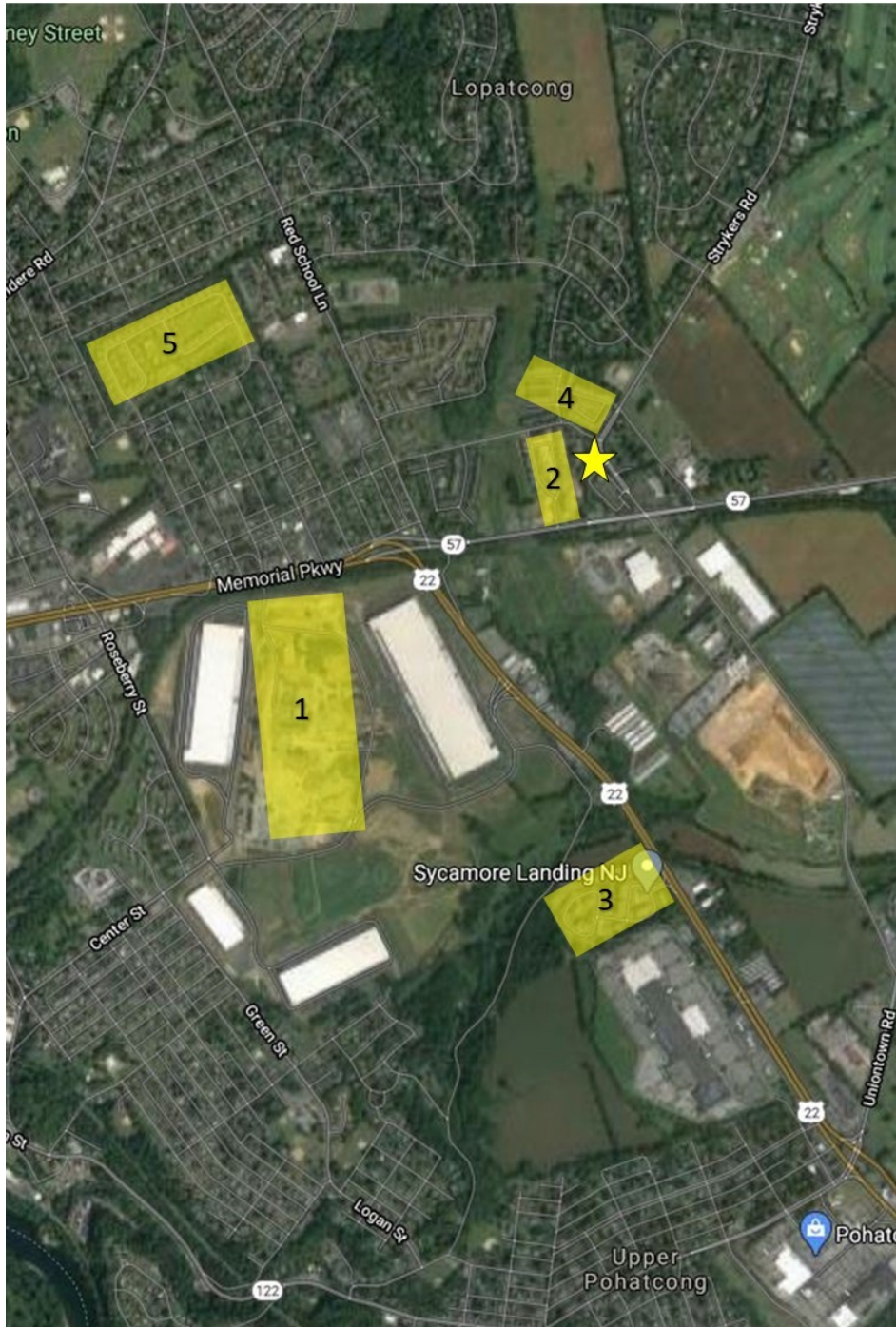


Linda Cinelli, CCIM & Edan Cohen  
 LC Realty

908-722-5661 / Linda@LCRealtyUSA.com  
 646-630-8511 / Edan@LCRealtyUSA.com



# Lopatcong Residential & Industrial Developments



## 1. Bridgepoint 78

942 Memorial Pkwy, Phillipsburg, NJ 08865

- 3.85 million-square-foot industrial development
- Phase-1 completed, 4-buildings 2.2 million square feet, leased to UNIQLO and Mark Anthony Brands as anchor tenants.
- Phase-2 currently under construction, will include 2 additional buildings totaling 1.67 million square feet.

## 2. Autumn Ridge

1500 Hyde Boulevard, Lopatcong, NJ 08865

- Apartments
- Built in 2020
- 198 Units/3 Stories

## 3. Sycamore Landing

1000 Birch Ln, Phillipsburg, NJ 08865

- Apartments
- Built in 2017
- 247 Units/3 Stories

## 4. Warren Heights

231 Windmill Ct, Phillipsburg, NJ 08865

- Apartments
- Built in 2008
- 155 Units/3 Stories

## 5. Horizons at Delaware Crossing

561 Edward St, Phillipsburg, NJ 08865

- Attached Luxury Homes
- 2006
- 121 Units

