



SELF STORAGE SALES NETWORK

Self Storage Facility Offering

Brown 2B Self Storage

2323 Jackson St.

Junction City, KS 66441



HIGHLIGHTS

- Expandable Facility
- Auction Pavilion Ideal for Climate Control Conversion
- All Steel Construction
- Excellent Exposure to Traffic going to Milford Lake
- Visibility on US Hwy 57 and Jackson Street

PROPERTY DATA

Price **\$400,000**

Total Square Feet **13,450**

Land Area **2 Acres**

Year Built **1974/2006**

Total Units **89**

Larry Goldman, CCIM

RE/MAX Commercial

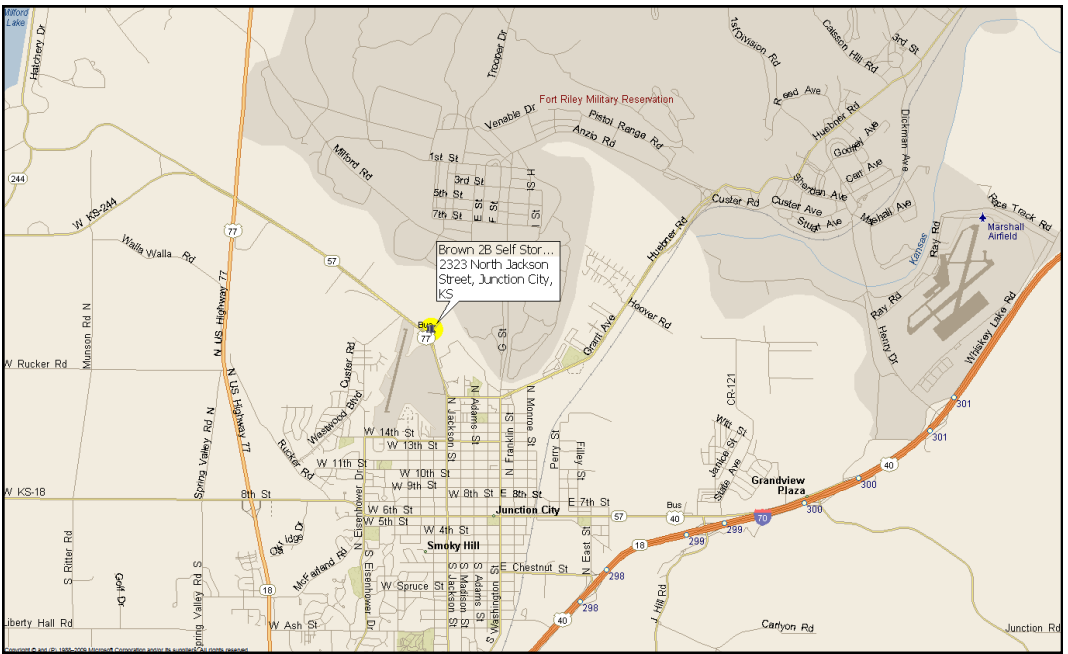
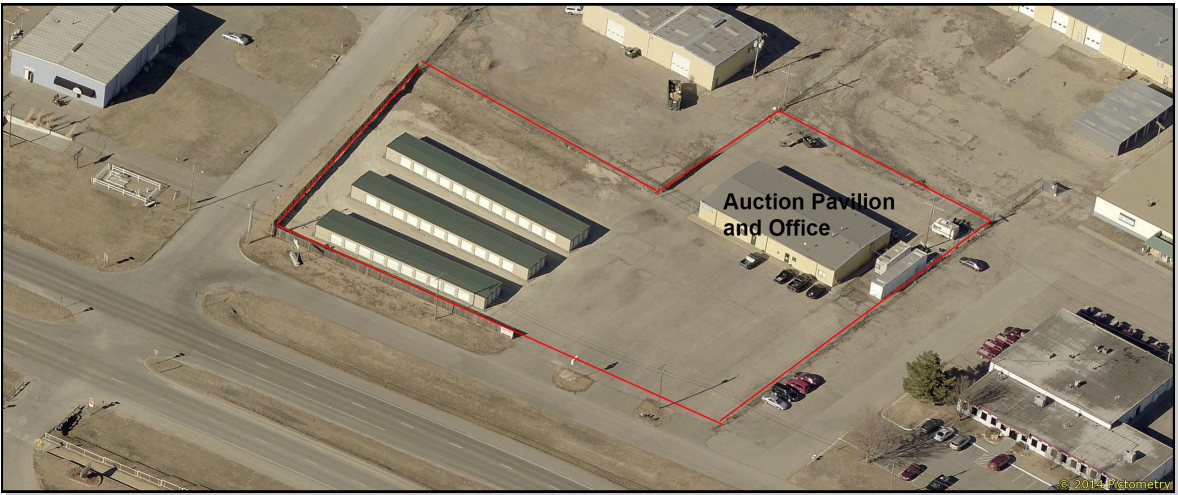
913-707-9030

lgoldman@selfstorage.com





2323 Jackson St., Junction City, KS 66441



Larry Goldman, CCIM
RE/MAX Commercial
913-707-9030
lgoldman@selfstorage.com

